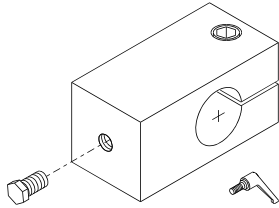


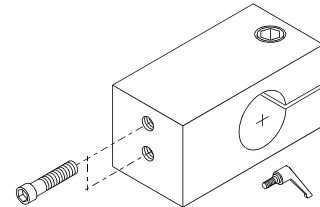
**79-03-03 • 79-03-04 • 79-03-10 • 79-03-13
92-79-29 • 79-03-14**

3/4" Round Mounting Blocks



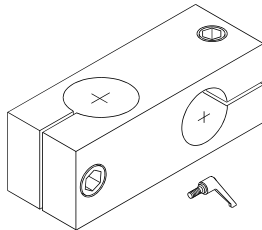
79-03-03

79-03-03 mounting block is used to mount VanSco's Pro Series Controllers. Two are required for each installation.



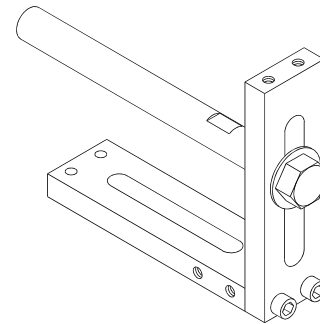
79-03-04

79-03-04 mounting block is used to mount VanSco's Air/Electric and Air Mizer controllers. One is sufficient for each mountable item.



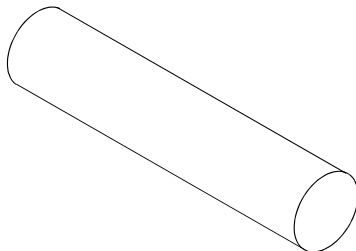
79-03-10

79-03-10 cross connector mounting block.



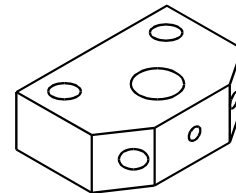
79-03-13

79-03-13 3/4" an assembly for mounting VanSco's 3/4" round mounting blocks. 79-03-13 can be configured for different mounting positions.



92-79-29

92-79-29 is a 3/4" aluminum round support bar for all 3/4" mounting brackets and mounting blocks. Available in 3 foot lengths.



79-03-14

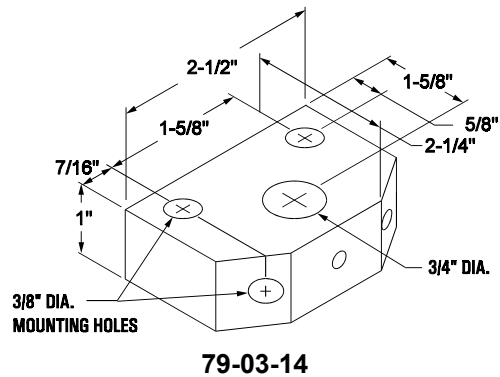
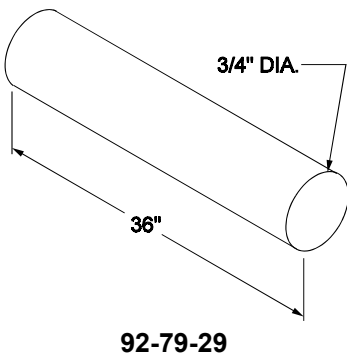
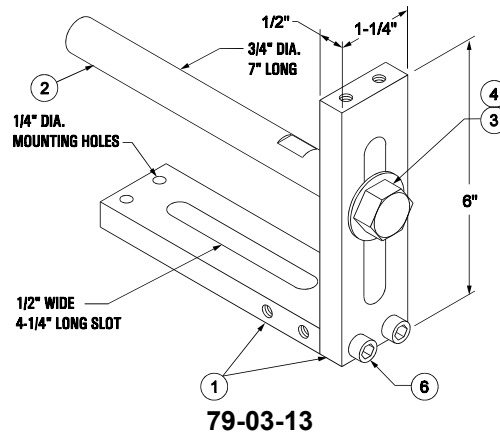
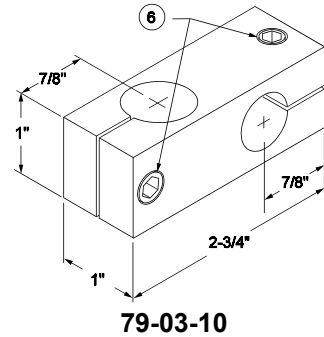
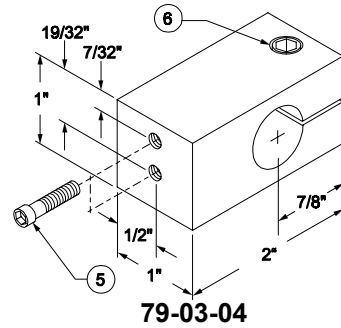
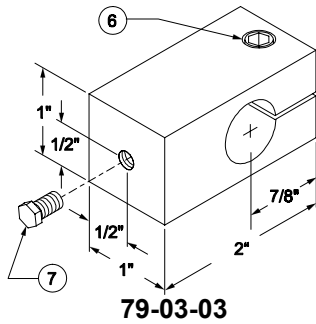
79-03-14 base mount for 3/4" round support bars.

All brackets on this page require a 3/16" allen wrench for adjustments.



92-79-09 Adjustable Lever is available for mounting blocks with 1/4-20 socket screws.

79-03-03 • 79-03-04 • 79-03-10 • 79-03-13 • 92-79-29 • 79-03-14
COMPONENT PARTS AND DIMENSIONS



ITEM	PART NO.	DESCRIPTION
1	92-79-31	Mounting Bracket Base
2	92-79-32	Cantilever Mounting Bar
3	90-07-51	1/2-20 X 1-1/2" Hex Head Screw
4	90-07-50	1/2" Flat Washer

ITEM	PART NO.	DESCRIPTION
5	90-06-00	10-32 X 1-1/4" SHCS
6	90-06-41	1/4-20 X 3/4" SHCS
7	90-05-72	1/4-20 X 1/2" Hex Head Screw

Distributed By:

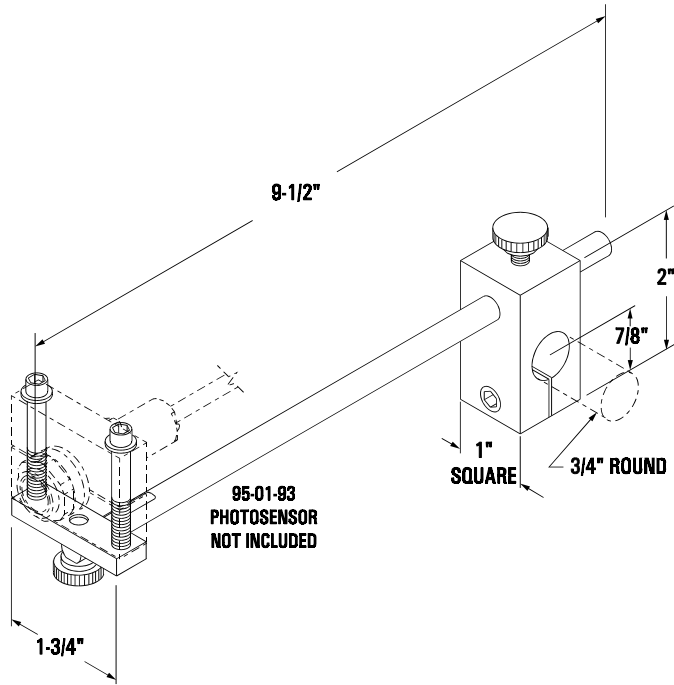
HAS1299

INTERNATIONAL HEADQUARTERS
 2652 Lashbrook Avenue • South El Monte, CA 91733 • 626-448-7611 • Fax 626-448-0221
 Sales and service offices world wide

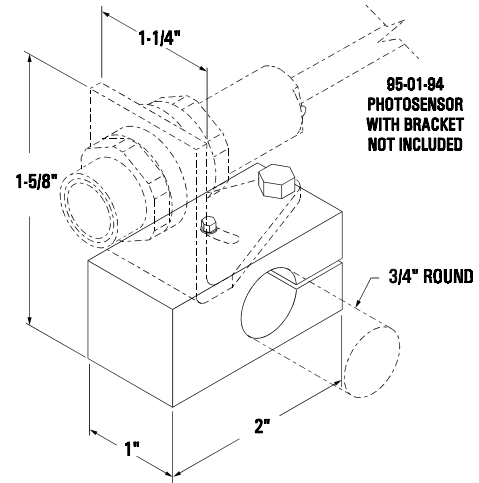


79-03-06
79-03-07
79-03-08

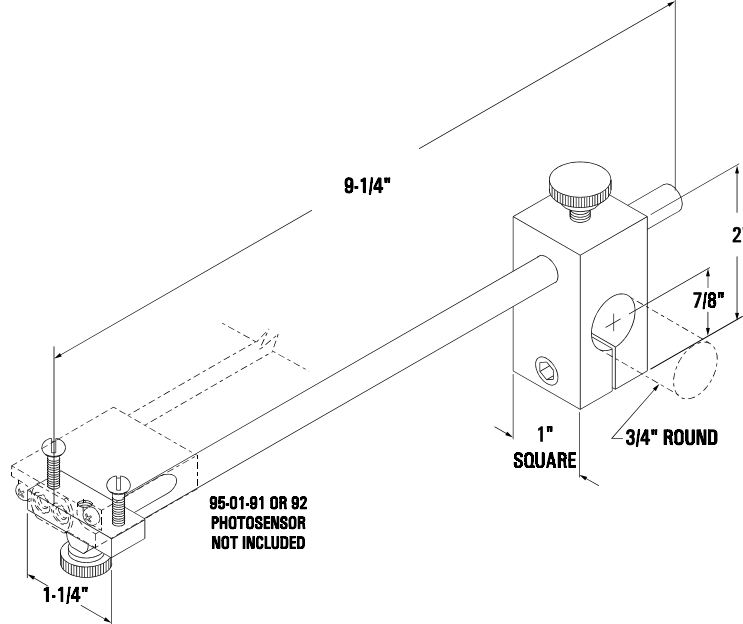
Photosensor Mounting Brackets



79-03-06



79-03-07

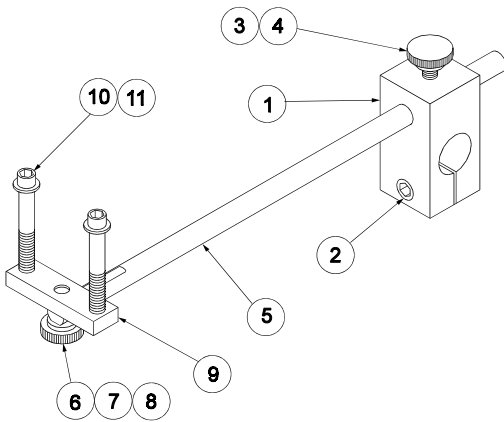


79-03-08

and adjust the Photosensor. Fully adjustable mounting brackets for VanSco's Photosensors. Convenient thumb screws to position

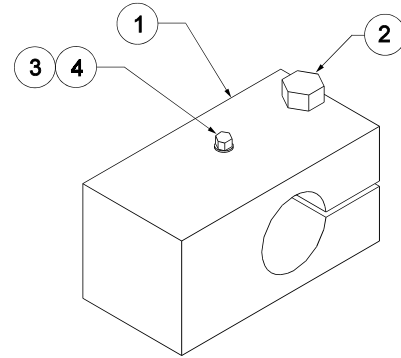
79-03-06
79-03-07
79-03-08

COMPONENT PARTS
Photosensor Mounting Brackets



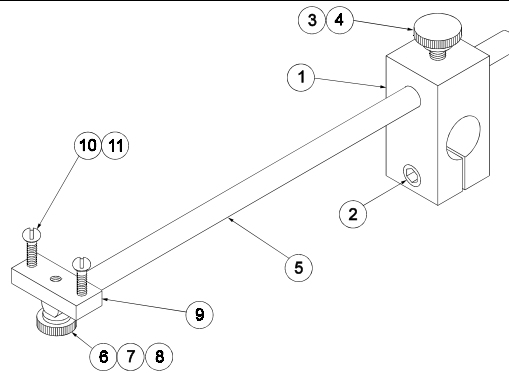
79-03-06

ITEM	PART NO.	QTY	DESCRIPTION
1	92-79-14	1	Mounting Bracket
2	90-06-41	1	1/4-20 X 3/4" SHCS
3	90-02-86	1	1/4-20 X 1/2" SHCS
4	90-07-21	1	1/4" Thumb Cap
5	92-79-17	1	Extension Arm
6	90-06-59	1	10-32 X 1/2" SHCS
7	90-06-99	1	#10 Thumb Cap
8	90-05-26	1	#10 Split Lock Washer
9	92-79-19	1	Photosensor Mounting Bracket
10	90-05-65	2	10-32 X 1-3/4" SHCS
11	90-05-27	2	#10 Flat Washer



79-03-07

ITEM	PART NO.	QTY	DESCRIPTION
1	92-79-16	1	Photosensor Mounting Bracket
2	90-05-76	1	1/4"-20 X 1" Hex Head Screw
3	90-07-22	1	8-32 X 5/16" Hex Head Screw
4	90-07-23	1	#8 Flat Washer



79-03-08

ITEM	PART NO.	QTY	DESCRIPTION
1	92-79-14	1	Mounting Bracket
2	90-06-41	1	1/4-20 X 3/4" SHCS
3	90-02-86	1	1/4-20 x 1/2" SHCS
4	90-07-21	1	1/4" Thumb Screw Cap
5	92-79-17	1	Extension Arm
6	90-06-59	1	10-32 X 1/2" SHCS

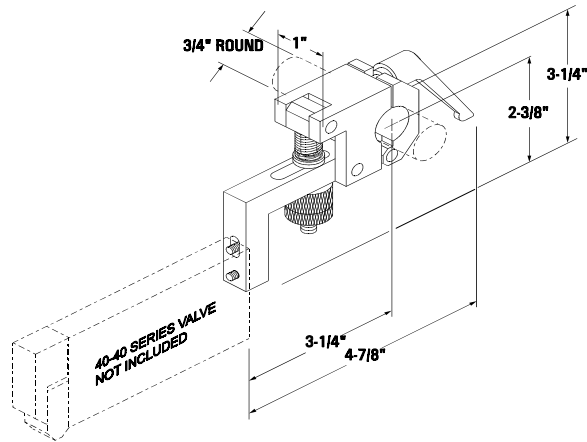
ITEM	PART NO.	QTY	DESCRIPTION
7	90-06-99	1	#10 Thumb Cap
8	90-05-26	1	#10 Split Lock Washer
9	92-79-18	1	Photosensor Mounting Bracket
10	90-07-24	2	6-32 X 3/4" Pan Head Screw
11	90-06-80	2	#6 Split Lock Washer

Distributed By:

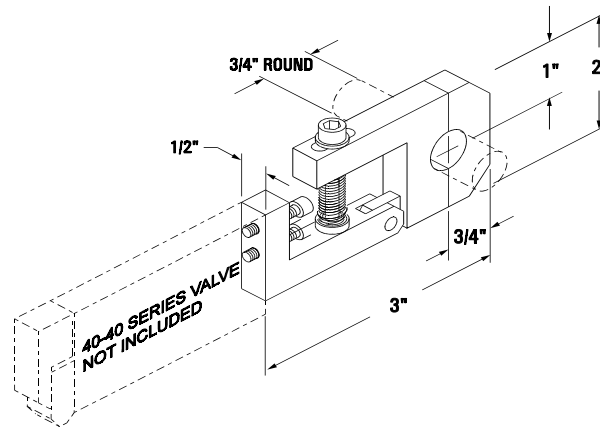
HAR0700

79-03-02
79-03-11
79-03-12

**40-40 Series
 Mounting Brackets**



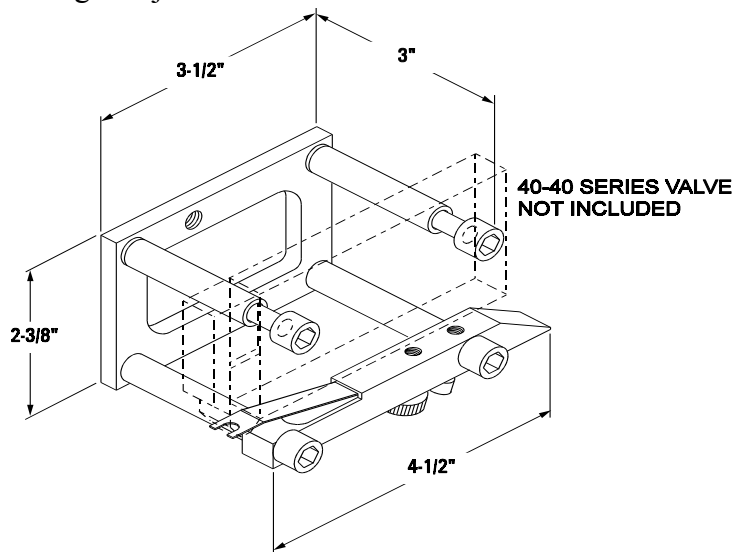
79-03-02



79-03-12

Fully adjustable mounting brackets with fine height adjustment used with VanSco's 40-40 Series Actuators.

A Slim Line bracket for applications where width space is at a minimum. Fully adjustable mounting brackets with fine height adjustment to be used with VanSco's 40-40 Series Actuators.



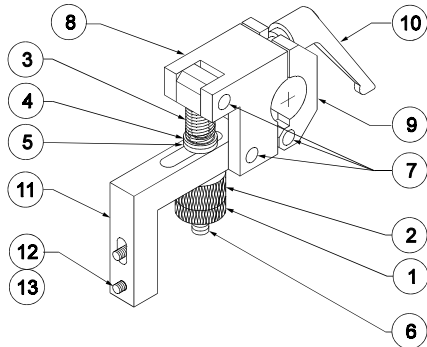
79-03-11

Spring tension mounting bracket to support substraight edge. Convenient adjustable spring tension.

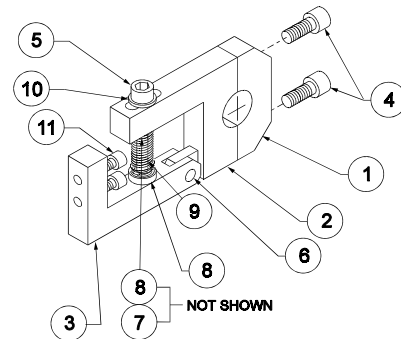


79-03-02
79-03-11
79-03-12

COMPONENT PARTS
Mounting Brackets



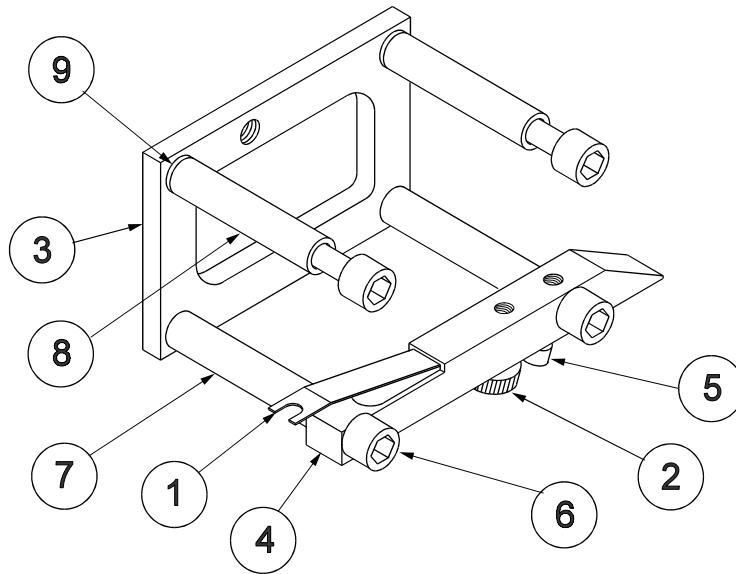
79-03-02



79-03-12

<u>ITEM</u>	<u>PART NO.</u>	<u>QTY</u>	<u>DESCRIPTION</u>
1	92-79-00	1	Adjustment Lock
2	92-79-01	1	Adjustment Nut
3	90-03-06	1	Spring
4	92-79-03	1	Spring Retainer
5	92-79-04	1	Teflon Washer
6	92-79-05	1	Swing Bolt
7	92-79-06	3	1/4" x 1" Pin
8	92-79-07	1	Bottom Clamp Half
9	92-79-08	1	Top Half Clamp
10	92-79-09	1	1/4" -20 Adj. Lever
11	92-79-12	1	Swing Arm
12	90-05-62	2	10-32 x 3/4" SHCS
13	90-05-27	2	#10 Flat Washer

<u>ITEM</u>	<u>PART NO.</u>	<u>QTY</u>	<u>DESCRIPTION</u>
1	92-79-23	1	Slim line Clamp Back
2	92-79-24	1	Slim line Clamp Front
3	92-79-25	1	Slim line Swing Arm
4	90-07-53	2	1/4"-20 X 3/4" SHCS
5	90-07-39	1	1/4"-20 X 2" SHCS
6	92-79-26	1	Pivot Pin
7	92-79-04	1	Teflon Washer
8	92-79-03	2	Spring Retainer
9	90-03-06	1	Spring
10	90-07-54	1	1/4" Flat Washer
11	90-06-59	2	10-32 X 1/2" SHCS



79-03-11

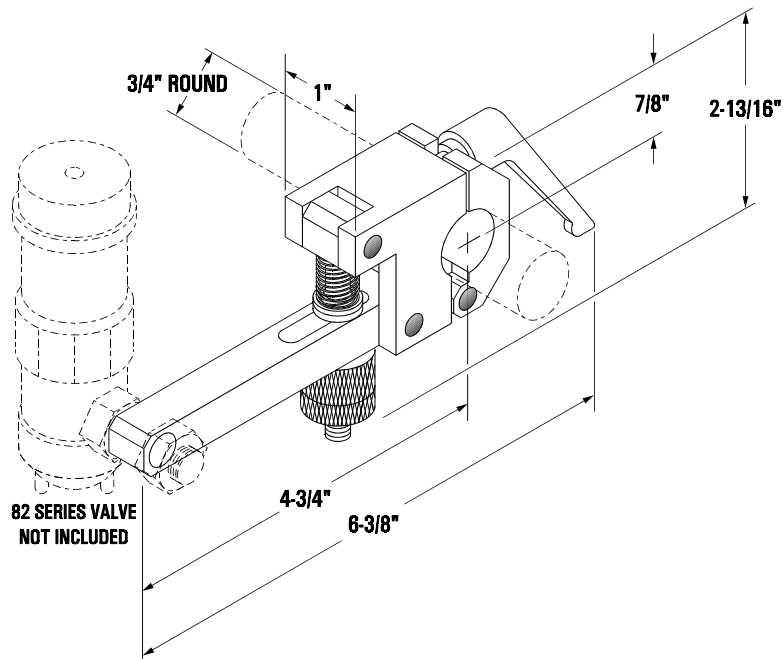
<u>ITEM</u>	<u>PART No.</u>	<u>QTY</u>	<u>DESCRIPTION</u>
1	90-71-42	1	Back Up Spring
2	90-71-45	1	Adjustment Knob
3	92-79-20	1	Side Plate
4	90-71-43	1	Guide Bar
5	90-07-05	1	10-32 X 3/8" SHCS
6	90-07-34	4	1/4"-20 X 3" SHCS
7	92-79-21	2	Lower Spacer
8	92-79-22	2	Upper Spacer
9	92-79-33	2	Washer

Distributed By:

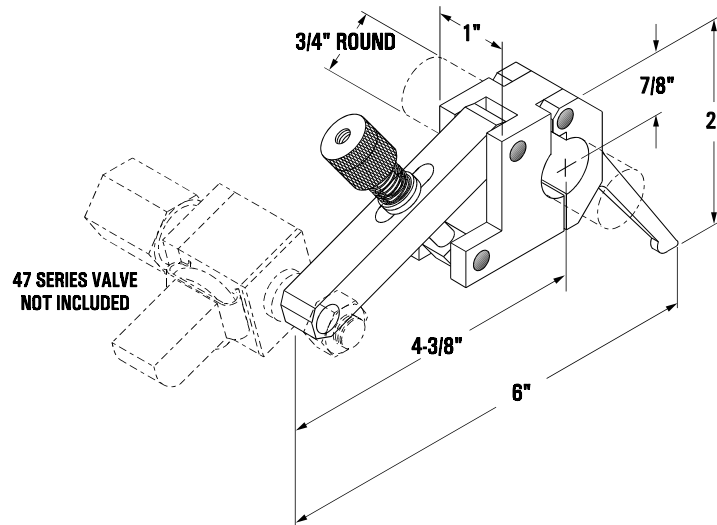
HAQ898

79-03-01
79-03-09

3/4" Round
Mounting Brackets
For 82 & 47 Series Adhesive Valve



79-03-01

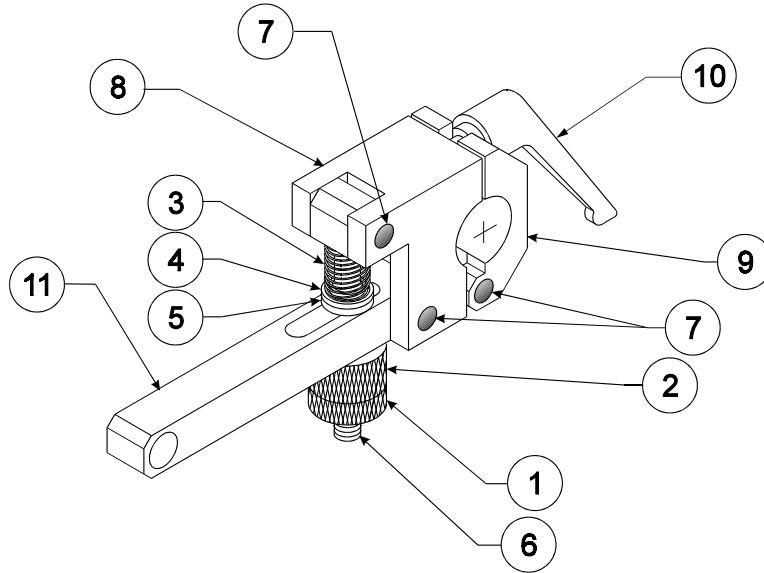


79-03-09

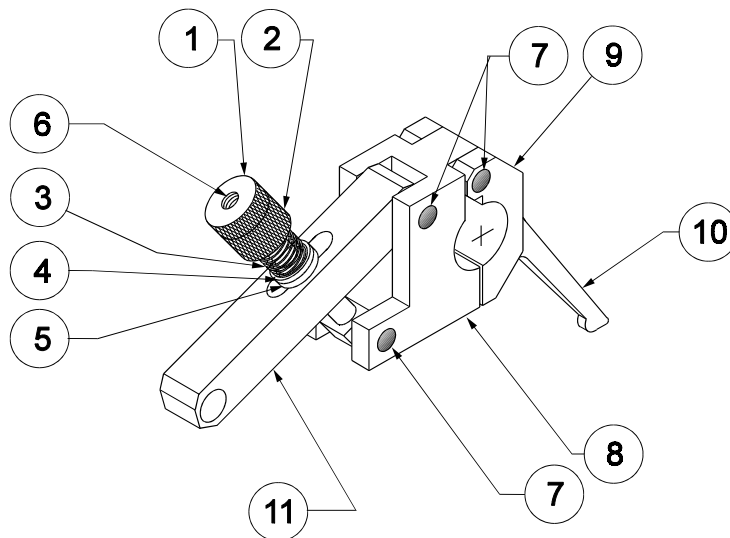
Fully adjustable Mounting Brackets to be used with VanSco's 82 Series, and 47 Series Applicator Valves. No tools are required to position the brack along a 3/4" round bar. Convenient no tool adjustment of spring tension.

79-03-01
79-03-09

COMPONENT PARTS
3/4" Round Mounting Brackets



79-03-01



79-03-09

ITEM	PART NO.	QTY	DESCRIPTION
1	92-79-00	1	Adjustment Lock
2	92-79-01	1	Adjustment Nut
3	90-03-06	1	Spring
4	92-79-03	1	Spring Retainer
5	92-79-04	1	Teflon Washer
6	92-79-05	1	Swing Bolt

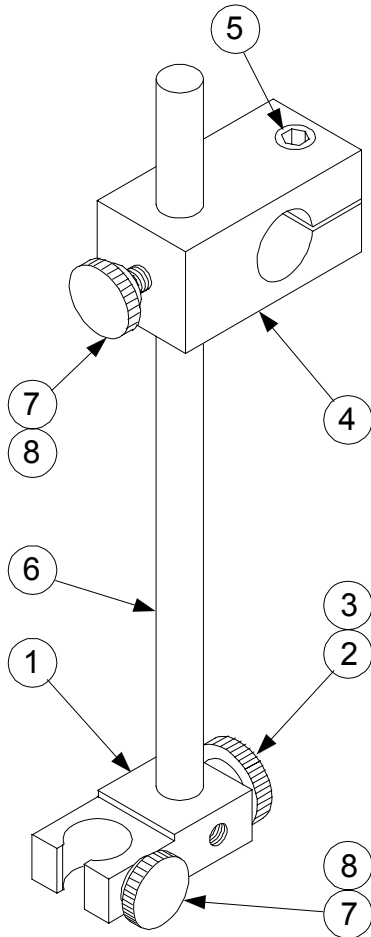
ITEM	PART NO.	QTY	DESCRIPTION
7	92-79-06	3	1/4" X 1" Pin
8	92-79-07	1	Bottom Clamp Half
9	92-79-08	1	Top Clamp Half
10	92-79-09	1	1/4"-20 X 20mm Adj. Lever
11	92-79-11	1	Swing Arm

Distributed By:

HAP898

INTERNATIONAL HEADQUARTERS
 2652 Lashbrook Avenue • South El Monte, CA 91733 • 626-448-7611 • Fax 626-448-0221
 Sales and service offices world wide. E-mail: sales@vansco.com • URL: vansco.com





<u>ITEM</u>	<u>PART NO.</u>	<u>QTY</u>	<u>DESCRIPTION</u>
1	92-79-35	1	Mounting Bracket
2	90-07-21	2	1/4" Thumb Screw Cap
3	90-02-86	2	1/4-20 X 1/2" Long SHCS
4	92-79-14	1	Mounting Block
5	90-06-41	1	1/4-20 X 3/4" Long SHCS
6	92-79-36	1	3/8" Dia. X 9" Long Extension
7	90-06-99	1	#10 Thumb Screw Cap
8	90-05-59	1	#10-32 X 1/4" Long SHCS

Distributed By:

HAT998