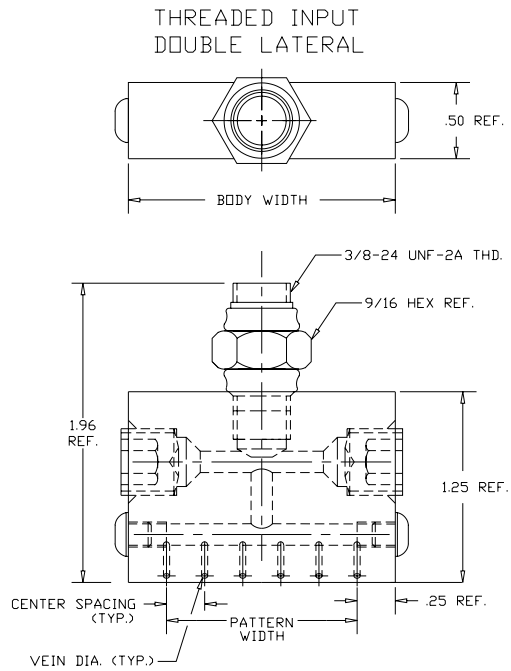
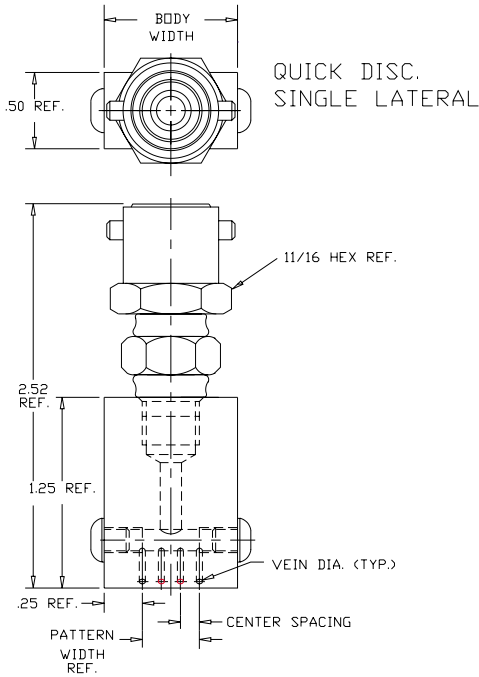


**BEADING TIPS**



Engineered for fast, efficient manual or machine operation. BEADING TIPS will lay a multiple-line pattern of glue on any flat top, bottom or vertical surface. BEADING TIPS are made of high-strength aluminum and all wear surfaces are hard molly-coated for a smooth, hard, long-wearing surface.

**NOTE:**All standard beading tips are manufactured with .040 veins on .125 or .25 centers. See illustration above. Specials can be made available on request.

**ALUMINUM SINGLE LATERAL BEADING TIPS -with 3/8-24 UNF (M) threaded inlet 799XX313**

- 0.040 veins on 0.125 centers

OVS p/n	ARO p/n	Pattern width in. (mm)
599xx101	401400	.25(6.3)
599xx102	401401	.375(9.5)
599xx103	401402	.500(12.7)
599xx104	401403	.625(15.9)
599xx106	401405	.875(22.2)
599xx105	401404	.750(19.0)
599xx107	401406	1.000(25.4)

**SINGLE LATERAL BEADING TIPS -with quick-disconnect adapter 752xx012**

- 0.040 veins on 0.125 centers

OVS p/n	ARO p/n	Pattern width in. (mm)
599xx151	401400-3	.25(6.3)
599xx152	401401-3	.375(9.5)
599xx153	401402-3	.500(12.7)
599xx154	401403-3	.625(15.9)
599xx155	401404-3	.875(22.2)
599xx156	401405-3	.750(19.0)
599xx157	401406-3	1.000(25.4)

**ALUMINUM BEADING TIPS - continued**

**DOUBLE LATERAL BEADING TIPS-with 3/8-24 UNF (M) threaded inlet 799xx313**

**DOUBLE LATERAL BEADING TIPS-with quick-disconnect adapter 755xx012**

**NOTE:**All standard beading tips are manufactured with .040 veins on .125 or .25 centers. See illustration on page 16. Specials can be made available on request.

• **0.040 veins on 0.125 centers**

OVS p/n	ARO p/n	Pattern width in. (mm)
599xx201	401407-10	1.125(28.6)
599xx203	401409-10	1.375(35.0)
599xx205	401411-10	1.625(41.3)
599xx207	401413-10	1.875(47.6)

• **0.040 veins on 0.125 centers**

OVS p/n	ARO p/n	Pattern width in. (mm)
599xx251	401407-13	1.125(28.6)
599xx253	401409-13	1.375(35.0)
599xx255	401411-13	1.625(41.3)
599xx257	401413-13	1.875(47.6)

• **0.040 veins on 0.25 centers**

OVS p/n	ARO p/n	Pattern width in. (mm)
599xx202	401408-10	1.250(31.7)
599xx204	401410-10	1.500(38.1)
599xx206	401412-10	1.750(44.5)
599xx208	401414-10	2.000(50.8)
599xx209	401416-10	2.250(57.1)
599xx210	401418-10	2.500(63.5)
599xx211	401420-10	2.750(69.8)
599xx212	401422-10	3.000(76.2)
599xx213	401423-10	3.250(82.5)
599xx214	401424-10	3.500(88.9)
599xx215	401425-10	3.750(95.2)
599xx216	401426-10	4.000(101.6)
599xx217	401428-10	4.500(114.3)
599xx218	401430-10	5.000(127.0)
599xx219	401434-10	6.000(152.4)

• **0.040 veins on 0.25 centers**

OVS p/n	ARO p/n	Pattern width in. (mm)
599xx252	401408-13	1.250(31.7)
599xx254	401410-13	1.500(38.1)
599xx256	401412-13	1.750(44.5)
599xx258	401414-13	2.000(50.8)
599xx259	401416-13	2.250(57.1)
599xx260	401418-13	2.500(63.5)
599xx261	401420-13	2.750(69.8)
599xx262	401422-13	3.000(76.2)
599xx263	401423-13	3.250(82.5)
599xx264	401424-13	3.500(88.9)
599xx265	401425-13	3.750(95.2)
599xx266	401426-13	4.000(101.6)
599xx267	401428-13	4.500(114.3)
599xx268	401430-13	5.000(127.0)
599xx269	401434-13	6.000(152.4)