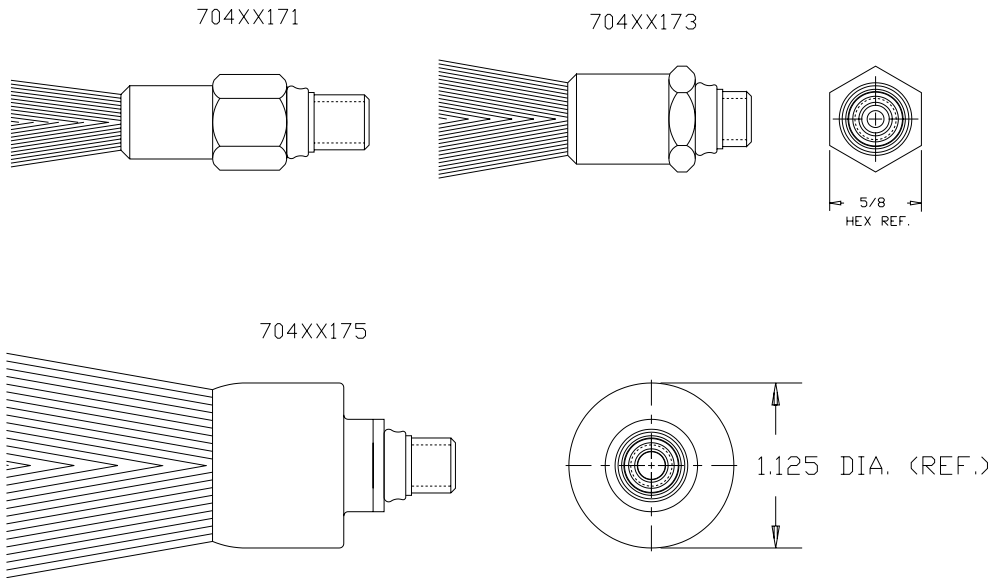


VALVE ACTUATED TIPS



FLOW BRUSHES

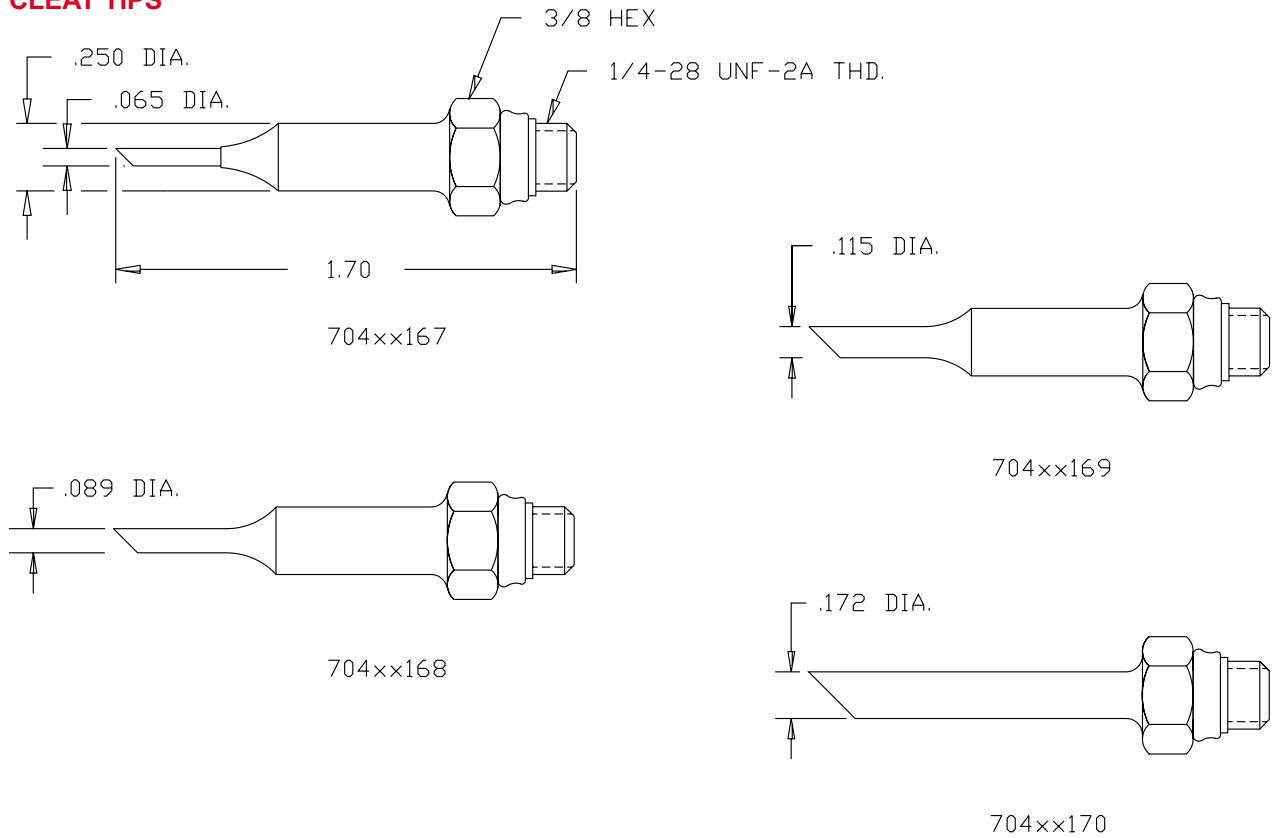
This versatile tip meets a wide range of unusual industrial gluing needs. It is particularly suited to jobs requiring application in a random pattern of solvent type adhesives, rubber cements, sealers, etc.

A FLOW BRUSH can be used on hard or soft surface gluing; which makes them ideal for use in joining such shaped materials as soft and porous plastics, insulation, foam rubber, fabrics, wood, metals, etc.

OVS p/n	ARO p/n	Working diameter in. (mm)	Bristle length in. (mm)	Bristle material
704xx171	403041	5/8(15.9)	3/4(19.0)	Horse Hair
704xx172	403042	5/8(15.9)	3/4(19.0)	Nylon
704xx173	403043	7/8(22.2)	7/8(22.2)	Horse Hair
704xx174	403044	7/8(22.2)	7/8(22.2)	Nylon
704xx175	403046	1 1/2(38.1)	1 1/2(38.1)	Horse Hair
704xx176	403047	1 1/2(38.1)	1 3/4(44.5)	Nylon

VALVE ACTUATED TIPS - continued

CLEAT TIPS

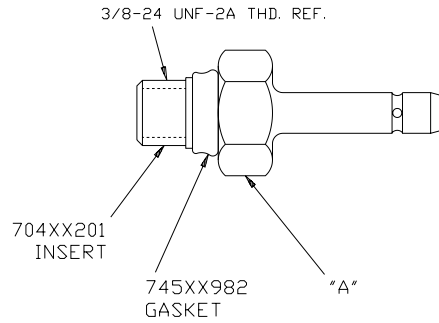


This versatile tip meets a number of high-speed production requirements such as inlay gluing and single-line stripping.

OVS p/n	ARO p/n	Vein Size Inches (mm)	Tip Size O.D. Inches (mm)	Tip Length Inches (mm)	Material
704xx167	404200	.047(1.2)	1/16(1.6)	1 7/16(36.5)	STAINLESS
704xx168	404201	.052(1.3)	3/32(2.4)	1 7/16(36.5)	STAINLESS
704xx169	404202	.052(1.3)	1/8 (3.2)	1 7/16(36.5)	STAINLESS
704xx170	404204	.090(2.2)	3/16(4.8)	1 7/16(36.5)	BRASS

BOTTOMLESS HOLE DOWEL TIPS

Designed to spread a uniform layer of adhesive along the inside wall of a hole.

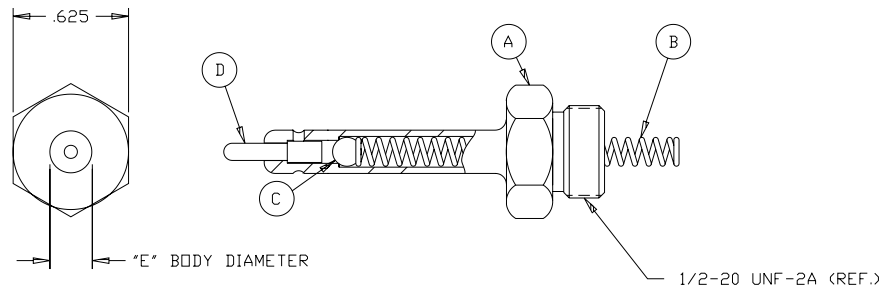


OVS p/n	ARO p/n	Hole diameter in. (mm)	"A" replacement tip	Tip length inches (mm)
704xx177	406100	1/4 (6.3)	724xx095	1(25.4)
704xx178	406101	5/16(8.0)	724xx096	1(25.4)
704xx179	406102	3/8 (9.5)	724xx097	1(25.4)
704xx180	406104	1/2 (12.7)	724xx098	1(25.4)

DOWEL TIPS

Designed to spread a thin layer of adhesive on the sides of the hole (not the bottom) to insure peak bonding action.

STANDARD HOLES 3/4-in. TO 1 5/16-in. (19.MM TO 33.3MM)DEEP



OVS p/n	ARO p/n	"A" body	"B" spring	"C" ball	"D" Plunger	"E" diameter
724xx066	405100	724xx099	793xx558	794xx683	704xx203	.234 (5.9)
724xx067	405101	724xx101	793xx559	781xx013	704xx204	.297 (7.5)
724xx068	405102	724xx103	793xx559	781xx013	724xx204	.355 (9.0)
724xx069	405103	724xx105	793xx560	794xx999	724xx109	.418 (10.6)
724xx070	405104	724xx106	793xx560	794xx999	724xx109	.480 (12.2)

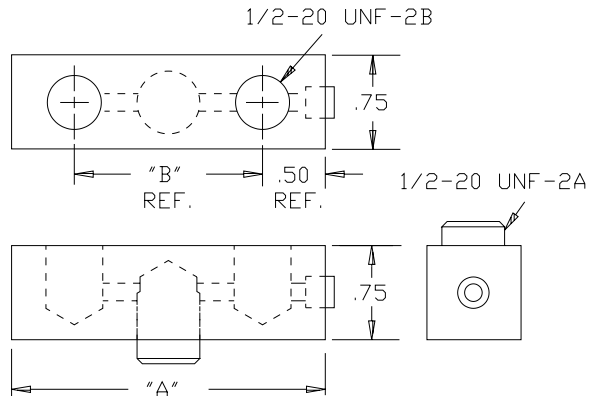
SHALLOW HOLES 5/16-in. TO 3/4-in. (7.9MM TO 19.0MM) DEEP

724xx071	405200	724xx100	793xx558	794xx683	704xx205	.234 (5.9)
724xx072	405201	724xx102	793xx559	781xx013	704xx205	.297 (7.5)
724xx073	405202	724xx104	793xx559	781xx013	704xx205	.355 (9.0)

CROSS BARS

Designed to hold two DOWEL TIPS at the required center-to-center spacing. Attaches to PLUNGER VALVE TIP HOLDER to provide an efficient dual-dowel.

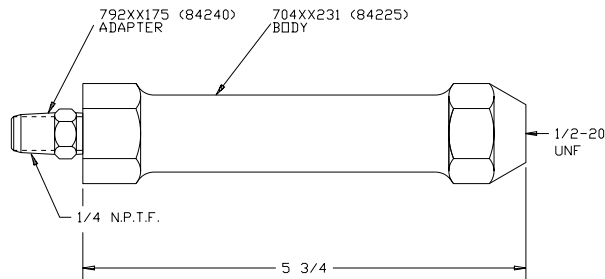
- 1/2-20 NPT inlet
- 1/2-20 UNF outlet



PART NO.	A	B
724XX074	1.750	.750
724XX075	1.875	.875
724XX076	2.000	1.000
724XX077	2.500	1.500

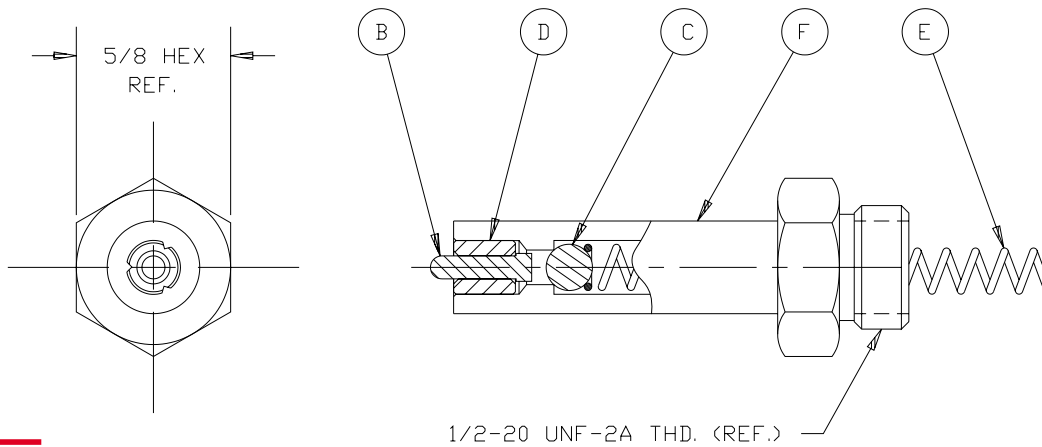
PLUNGER VALVE TIP HOLDER

For manual applications with plunger valve tips.



OVS p/n	ARO p/n	Pattern width in. (mm)
724xx061	407200	Plunger valve tip holder

PLUNGER VALVE TIPS



SPOT TIPS

Have built in spring tip shut-off valve that is actuated by pressing the plunger against the work surface. As the tip lifts from the work surface the valve automatically closes to stop the flow of glue. The action is instantaneous and fully controlled. These units are ideally suited for both manual and machine application. Will operate satisfactorily at speed up to 200 impressions per minute.

OVS p/n	ARO p/n	"A" diameter	"B" plunger	"C" ball	"D" Insert	"E" spring	"F" body
724xx062	405300	1/4 (6.3)	704xx206	794xx683	704xx214	793xx558	724x091
724xx063	405301	5/16 (7.9)	704xx207	781xx013	704xx215	793xx559	724xx092
724xx064	405302	3/8 (9.5)	704xx207	781xx013	704xx216	793xx559	792xx093
724xx065	405306	5/8 (16)	704xx208	794xx999	704xx217	793xx560	792xx094